



Aspinwall and Bruecken Pump Station Improvements

Lincoln-Lemington Community Consensus Group

February 12, 2022

Agenda

- Welcome and Introductions
- Introduce Arts Commission Requirements
- Introduce Water Reliability Plan
- Design Plans for Aspinwall and Bruecken Pump Stations
- Review Project Schedule
- Discuss Community Outreach Plan
- Questions and Answers

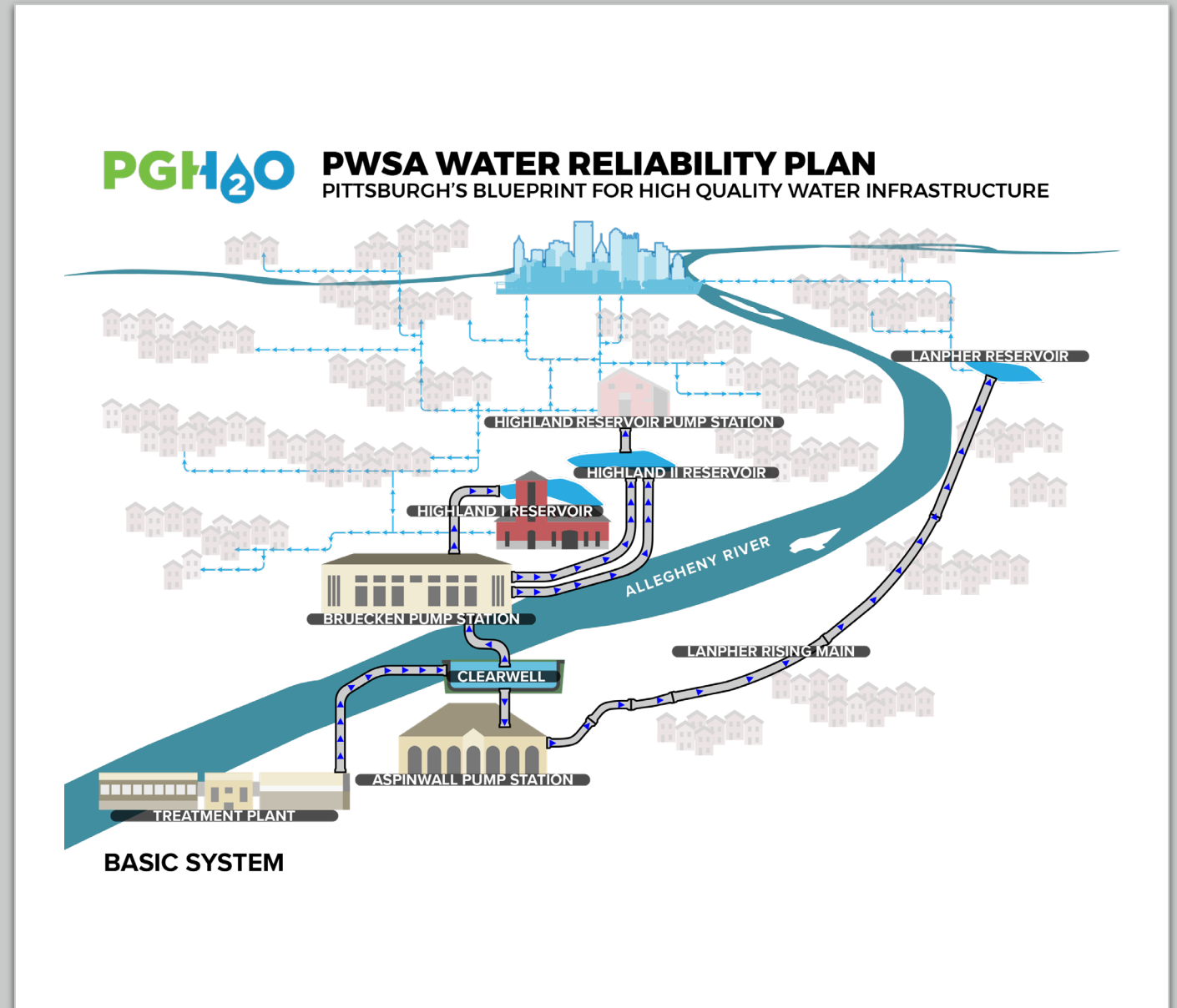
Arts Commission Requirements

“The Art Commission is mandated to review the urban design, architectural, and landscape features of structures that are erected on or above land owned by the City.” – pittsburghpa.gov

- Aspinwall and Bruecken Pump Stations are publicly-owned facilities on city-owned land, therefore requiring them to go through City of Pittsburgh Art Commission review before construction.
- Both the Aspinwall and Bruecken Pump Stations are within the Lincoln-Lemington-Belmar neighborhood, which is why we are presenting our plans to you.
- The feedback from this meeting will be incorporated into our submission to the City of Pittsburgh Art Commission.

Water Reliability Plan

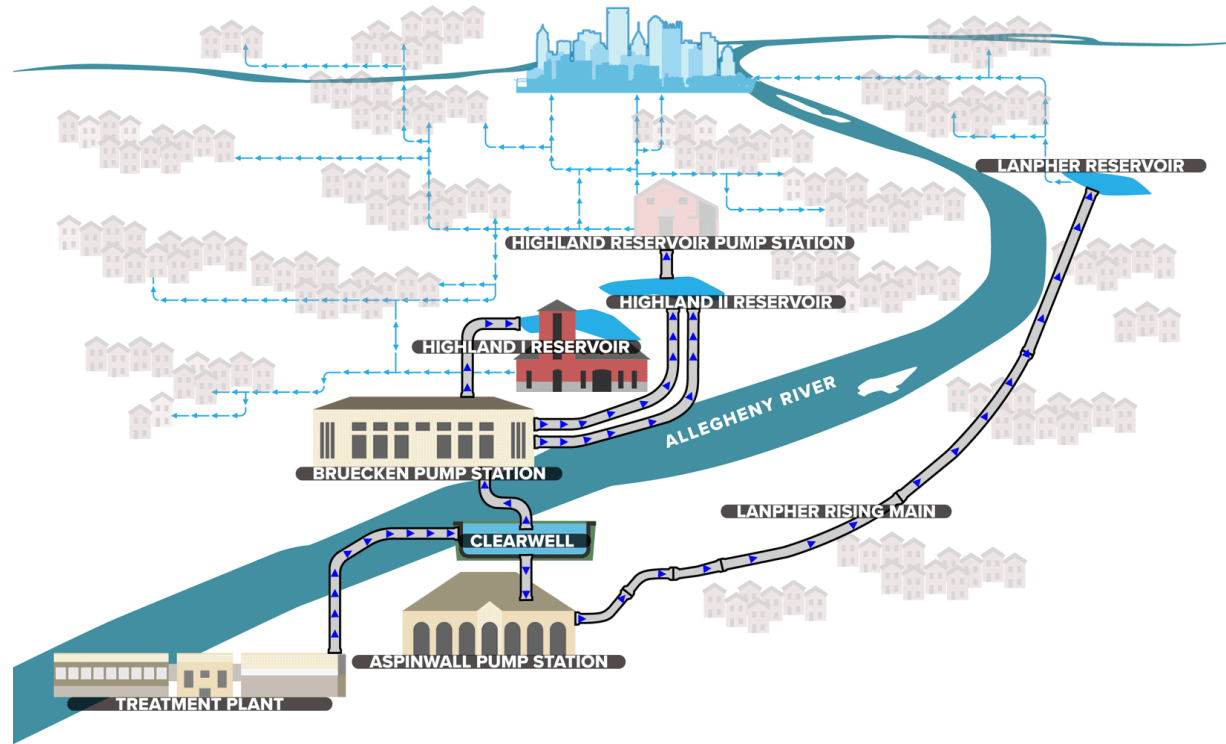
- Series of once-in-a-generation projects
- Will strengthen and add redundancy to water system
- Culminates with complete restoration of Clearwell
- Required by State through Consent Order
- Investment of \$300 million over next five years





PWSA WATER RELIABILITY PLAN

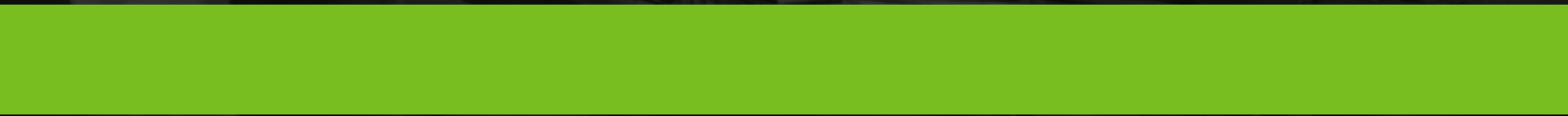
PITTSBURGH'S BLUEPRINT FOR HIGH QUALITY WATER INFRASTRUCTURE



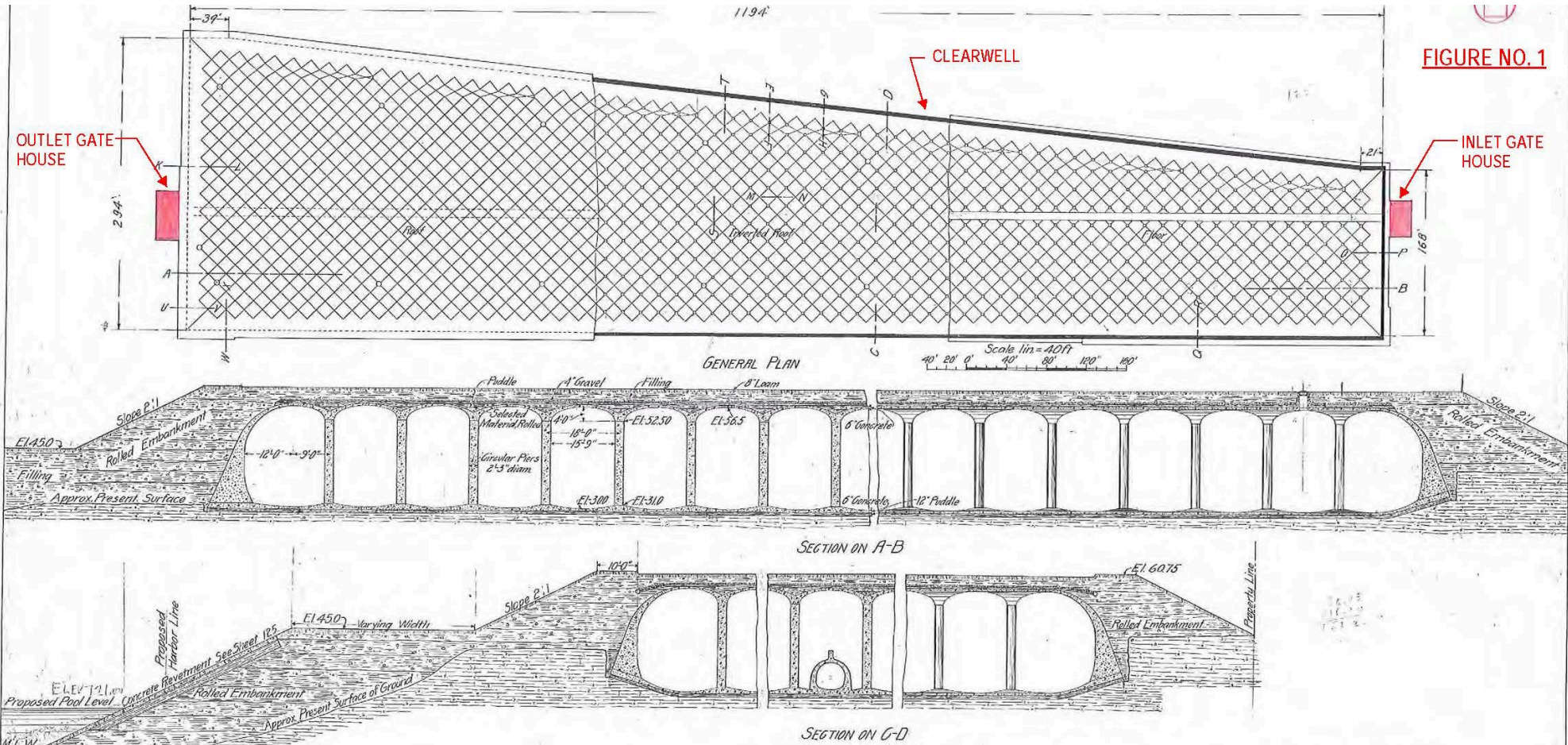
BASIC SYSTEM



Clearwell Replacement



Clearwell Replacement





Pumping, Storage, & Distribution Projects

Pumping Projects



Aspinwall Pump Station

Distribution Projects



Redundant Lanpher
Rising Main

Storage Projects



Lanpher Reservoir (Completed)



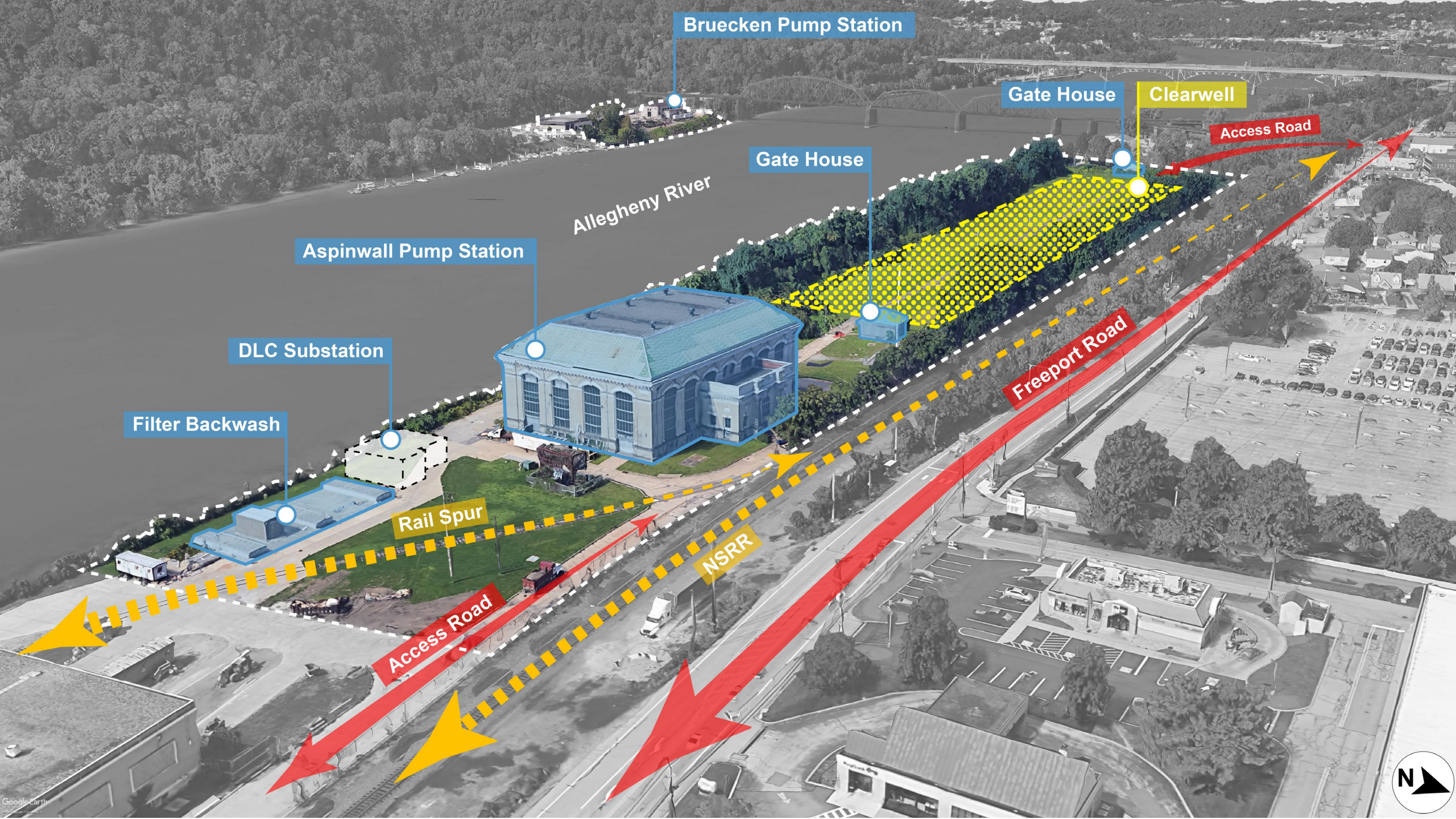
Bruecken Pump Station



Rising Mains
3 and 4



Highland Reservoir #2



Bruecken Pump Station

Gate House

Clearwell

Access Road

Allegheny River

Gate House

Freepoint Road

Aspinnacle Pump Station

DLC Substation

Filter Backwash

Rail Spur

NSRR

Access Road





Aspinwall Pump Station



St. Margaret Hospital

River Ave.

Giant Eagle

PWSA Main Entrance

Clearwell

Aspinwall Pump Station

PWSA WTP

Allegheny River

Virginia

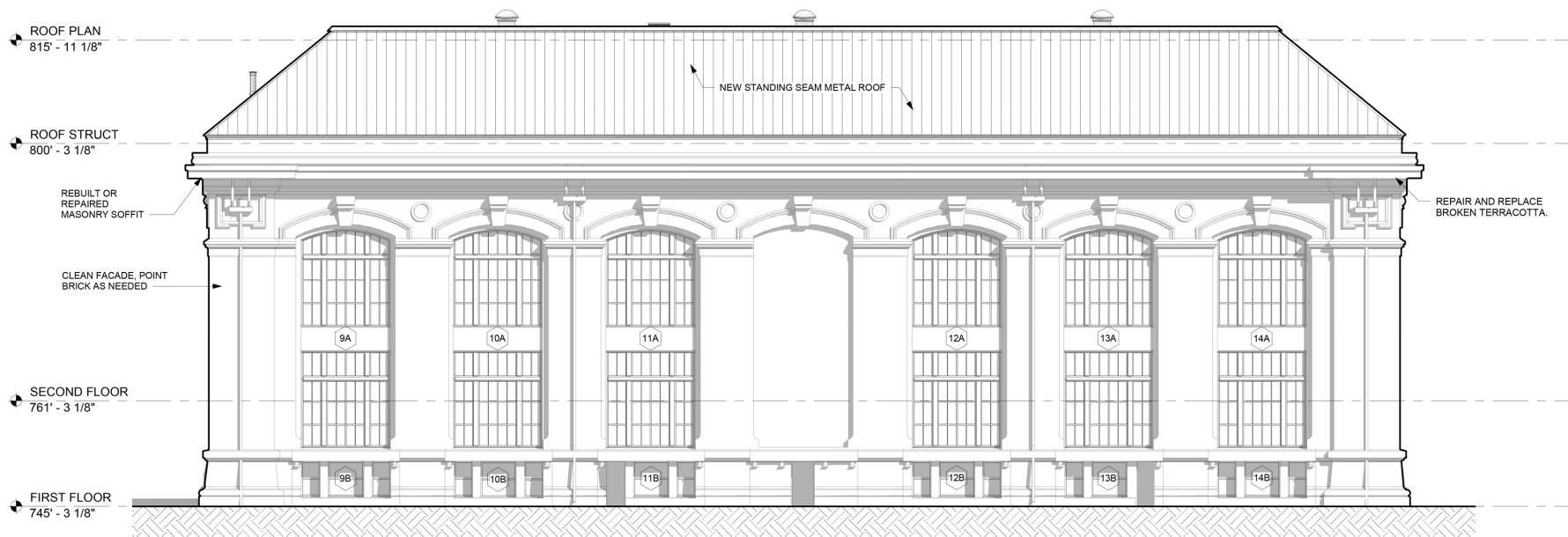
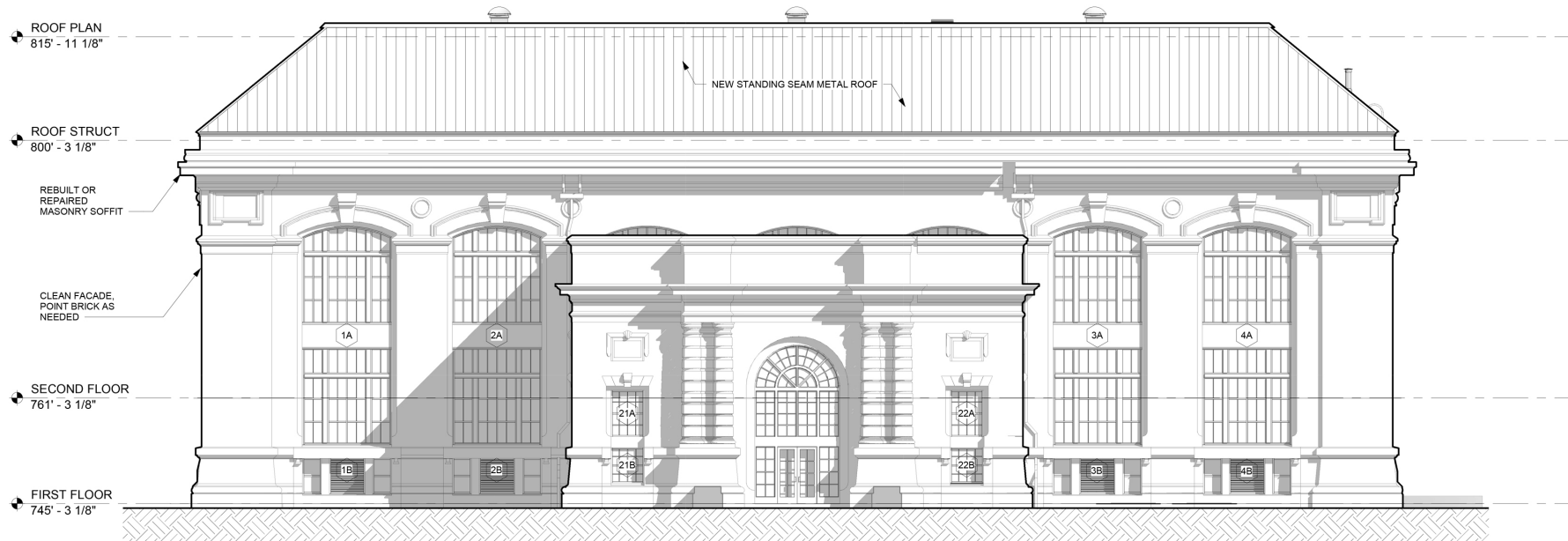
St Margaret Dr

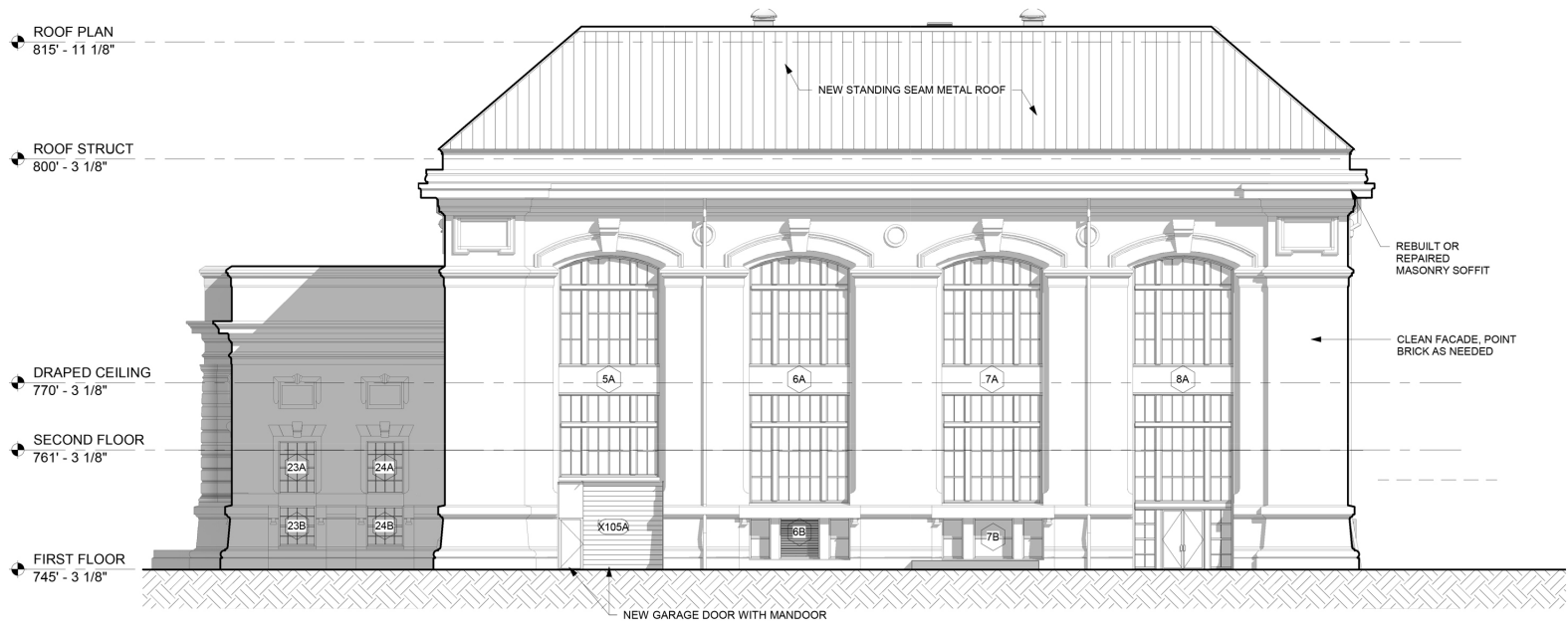
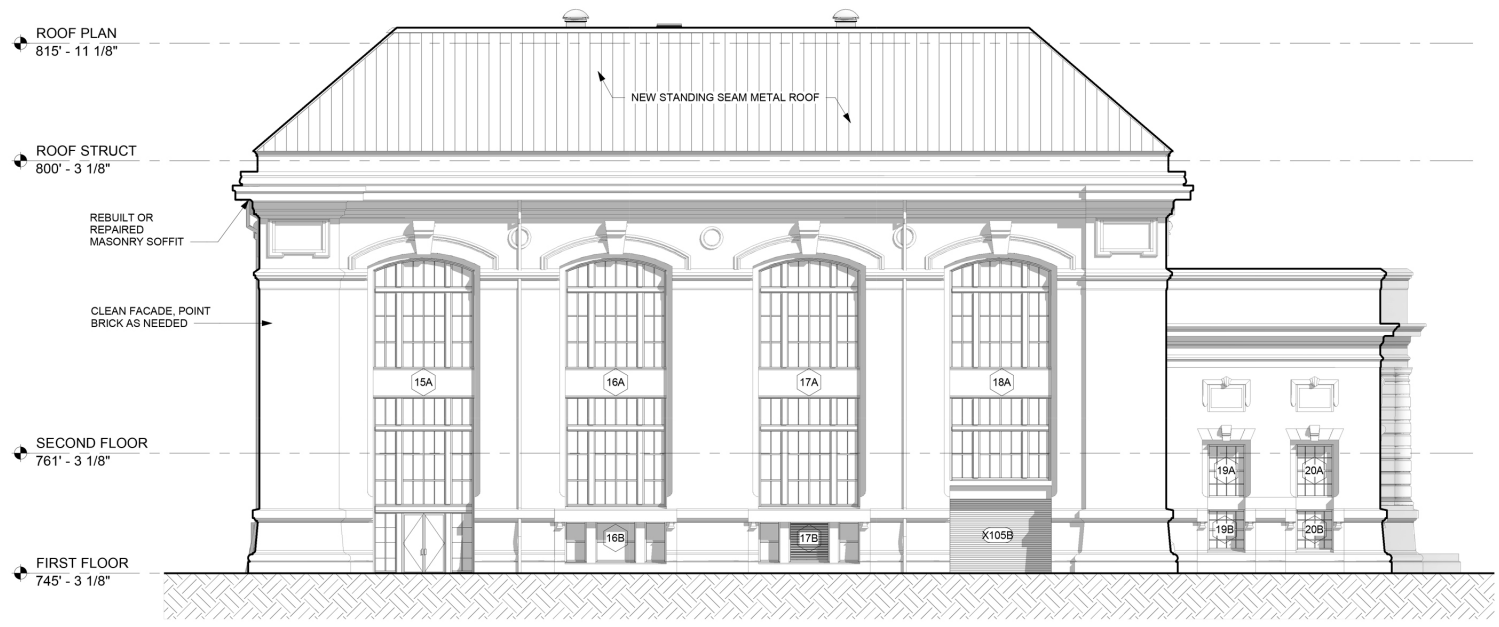
Freepart Rd

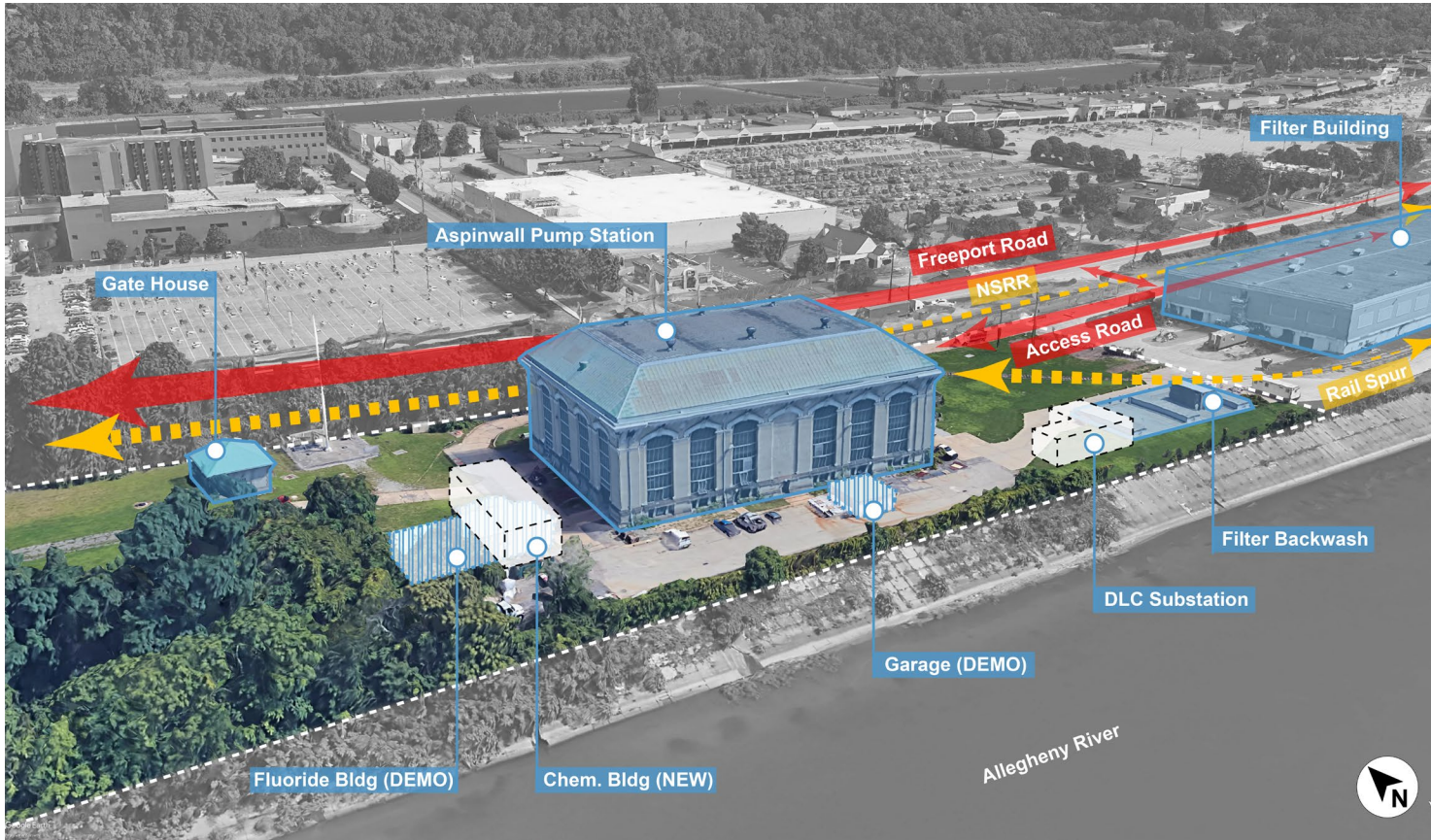
Free



**Aspinwall Pump
Station**

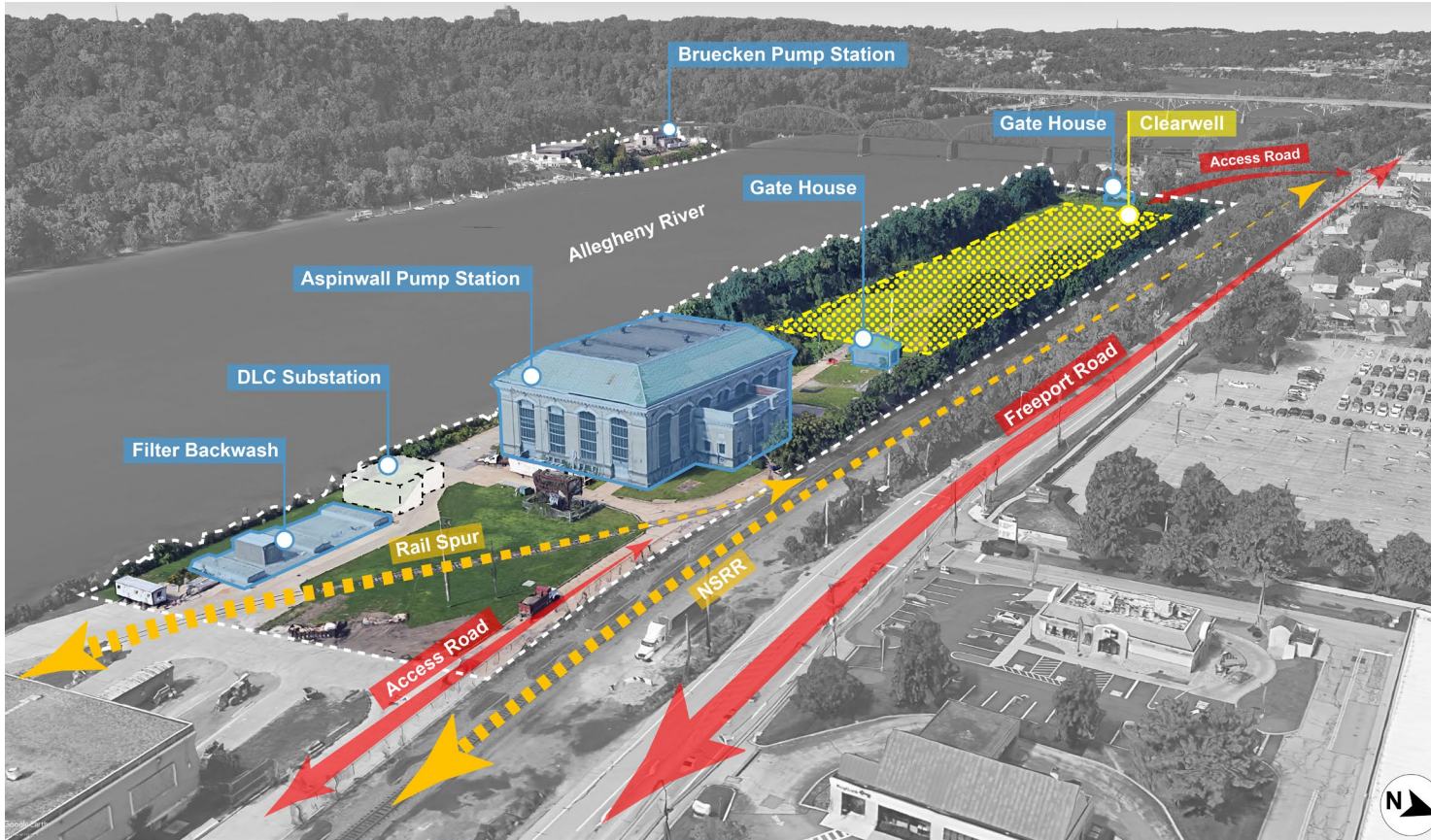






- Interior upgrades to pump station
- Exterior upgrades to the pump station include windows and roofing
- Tree removal to the south of the Clearwell for Bypass system
- Demolish fluoride station and garage adjacent to pump station
- Construct new fluoride building
- Construct electrical substation (by Duquesne Light)

Aspinwall Pump Station

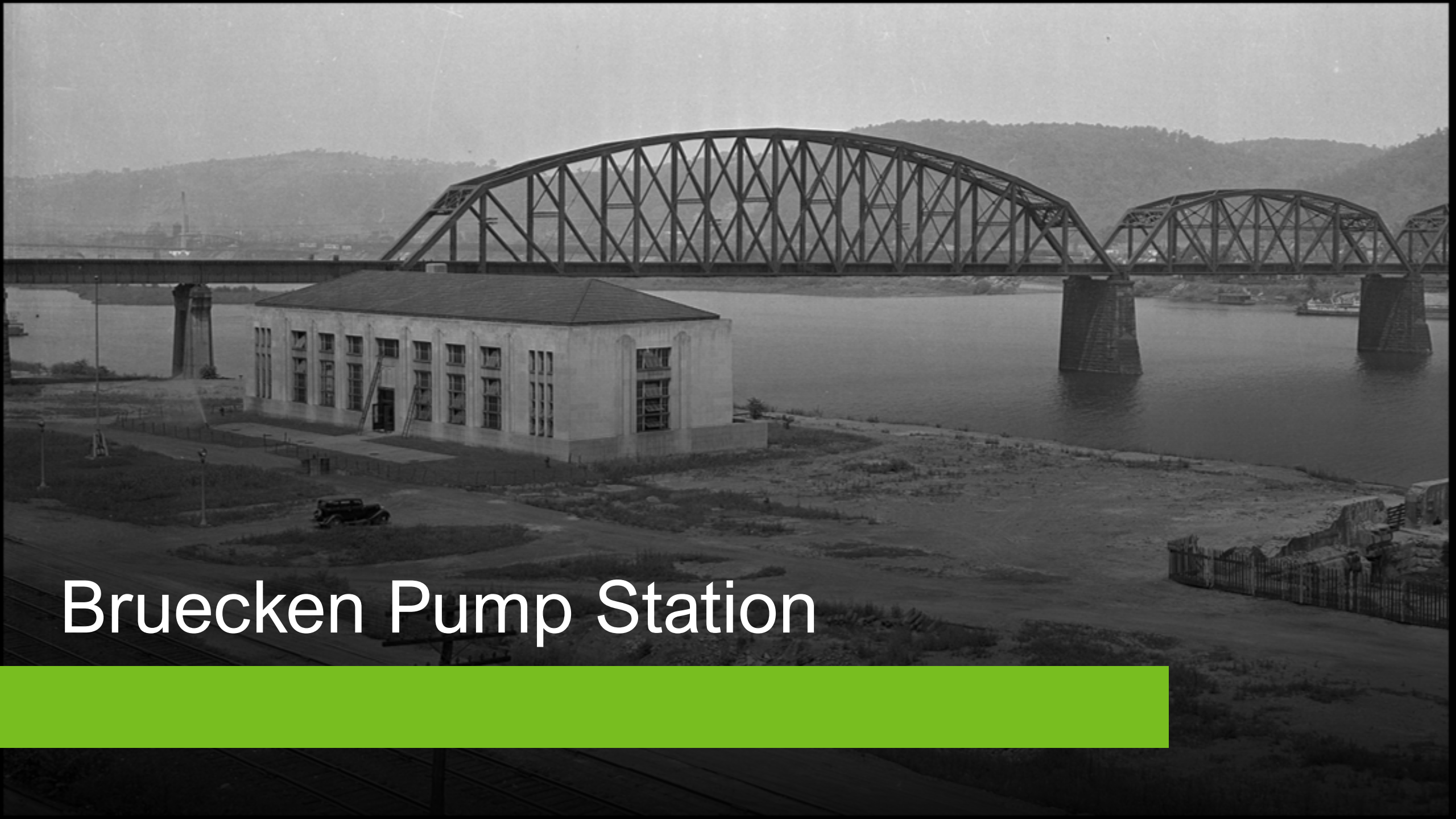


Aspinwall Pump Station Construction Impacts

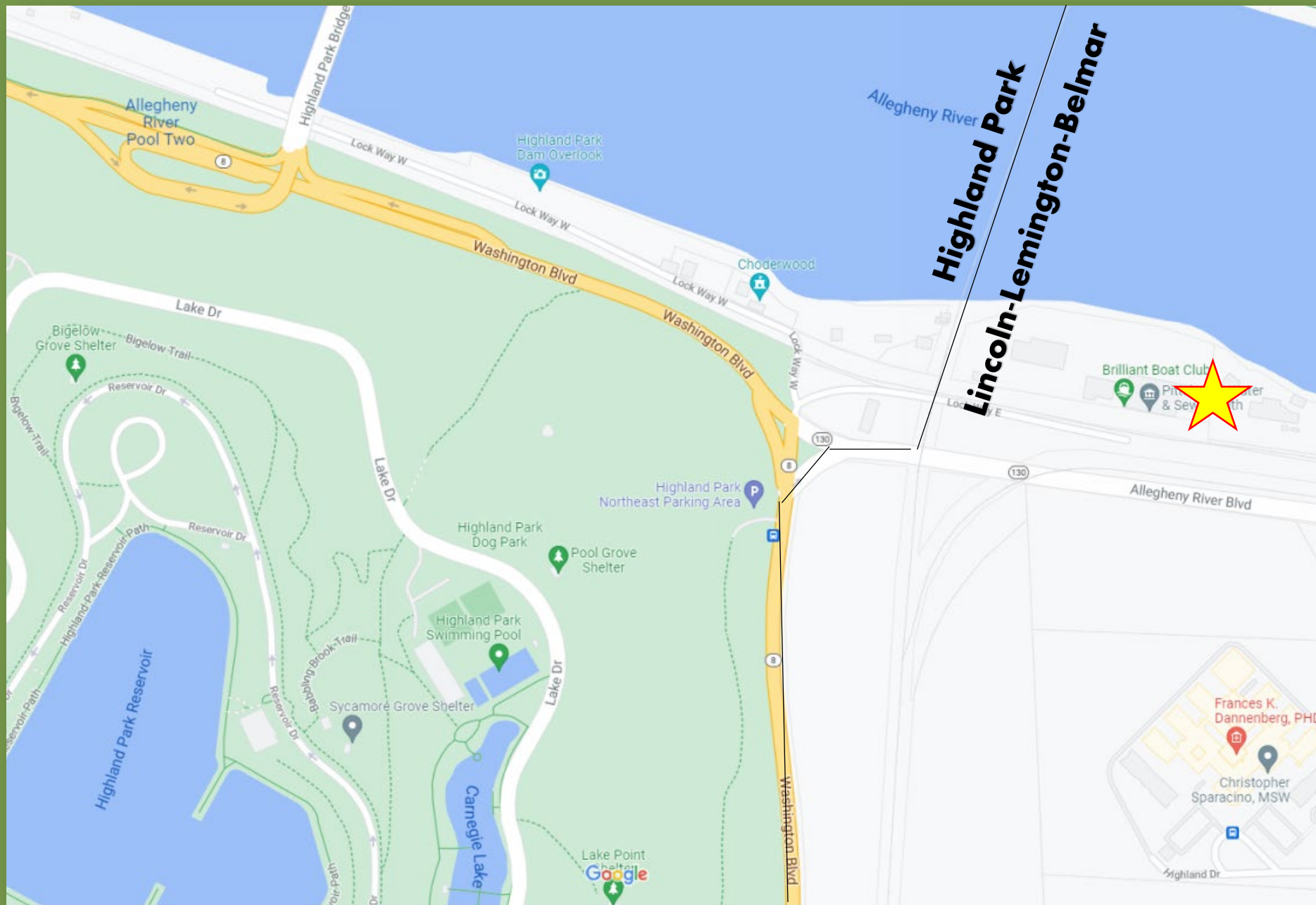
- Primary Construction Entrance will be at the main treatment plant entrance on Freeport Road.
- A 2nd construction access will utilize River Avenue and driveway to PWSA facilities to the west of Clearwell
- All work will occur within the facility
- Project Schedule
 - M-F, 7:00a.m. – 5:00 p.m.

Project Timeline: Aspinwall Pump Station

Project/Phase	Anticipated Schedule
Design Completion and Permitting	Final design is on-going. Permitting in progress.
Aspinwall Pump Station Construction	Contract Award: Winter 2022 Construction Start: Spring 2023 Anticipated Completion: Late 2025/Early 2026



Bruecken Pump Station



Highland Park
Lincoln-Lemington-Belmar

Bruecken
Pump
Station

Frances K. Dannenberg, PHD
Christopher Sparacino, MSW



Aspinwall Campus

PWSA Admin Bldg

Bruecken Pump Station NEW

Bruecken Pump Station EXG

DPW Site

Allegheny River

Temp. Construction Rd

Lock Way E

Allegheny River Blvd

AVRR

Lock Way W



SETTING THE STAGE:

GUIDING PRINCIPLES :

The proposed Breucken Pump Station represents a critical piece of infrastructure for the City of Pittsburgh and the surrounding communities. Ever since Pittsburgh was formally established in 1794, water has played a critical role in the city's capacity to accommodate industry and to provide potable drinking water to the citizens of Pittsburgh. The site of the proposed Breucken Pump Station has witnessed this history firsthand and as the city has grown and evolved over time so too has the site adjacent to the Brilliant Branch. Beginning in 1879, the Brilliant Pump Station was erected on this site to provide water to the Highland Park Reservoir. In 1931, the 1879 structure was replaced by a smaller, technologically advanced facility to meet the ever growing demands for water in Pittsburgh. That legacy continues today with the proposed Bruecken Pump Station improvements.

Recognizing the historical importance of this site and the importance of this critical piece of infrastructure, the project team has established a set of 'Guiding Principles' to help facilitate and vet design decisions. Those principles are outlined below.

1 BUILDING PERFORMANCE

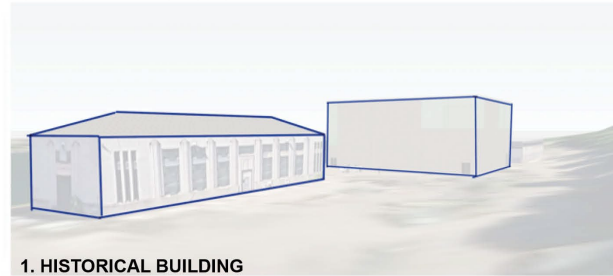
- HIGH PERFORMANCE ARCHITECTURE
- ARCHITECTURE THAT RESPONDS TO PROGRAM
- DURABILITY / RESILIENCE
- ECONOMICAL CONSTRUCTION
- ADAPTABLE CONSTRUCTION

2 ADDRESS IMMEDIATE CONTEXT

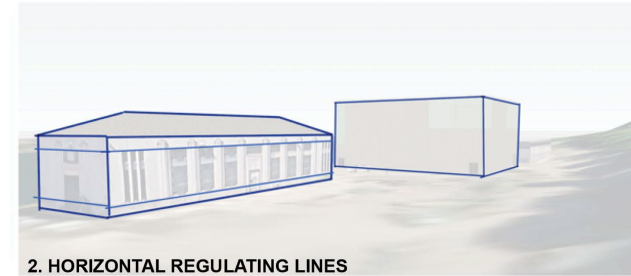
- 1931 BRUECKEN PUMP STATION
- BRILLIANT YARD 7779

3 ADDRESS ADJACENT CONTEXT

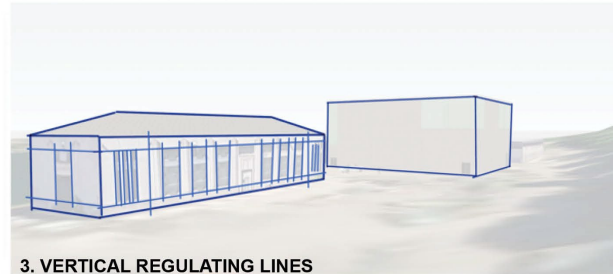
- ASPINWALL RIVER FRONT PARK
- HIGHLAND PARK



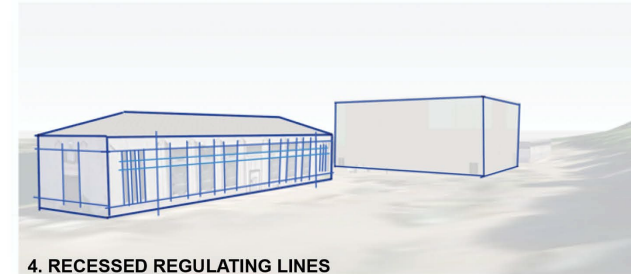
1. HISTORICAL BUILDING



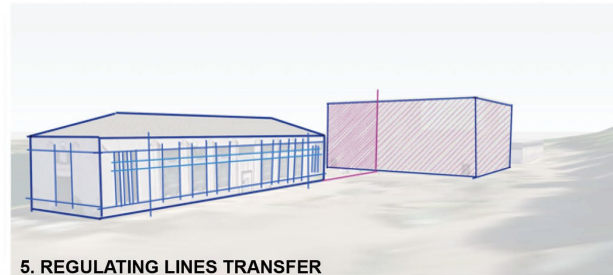
2. HORIZONTAL REGULATING LINES



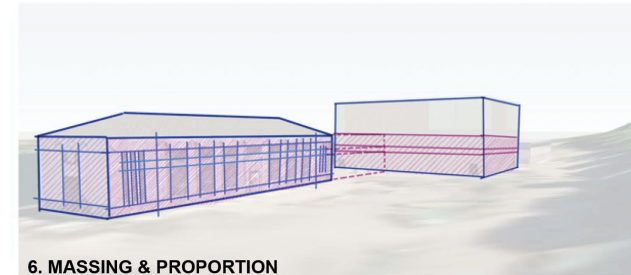
3. VERTICAL REGULATING LINES



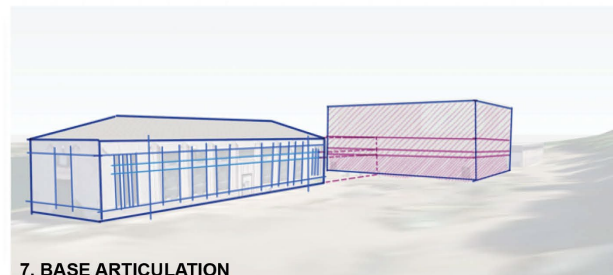
4. RECESSED REGULATING LINES



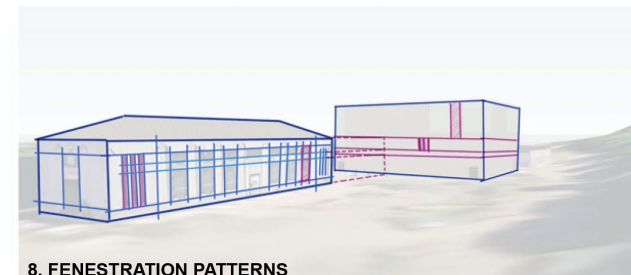
5. REGULATING LINES TRANSFER



6. MASSING & PROPORTION

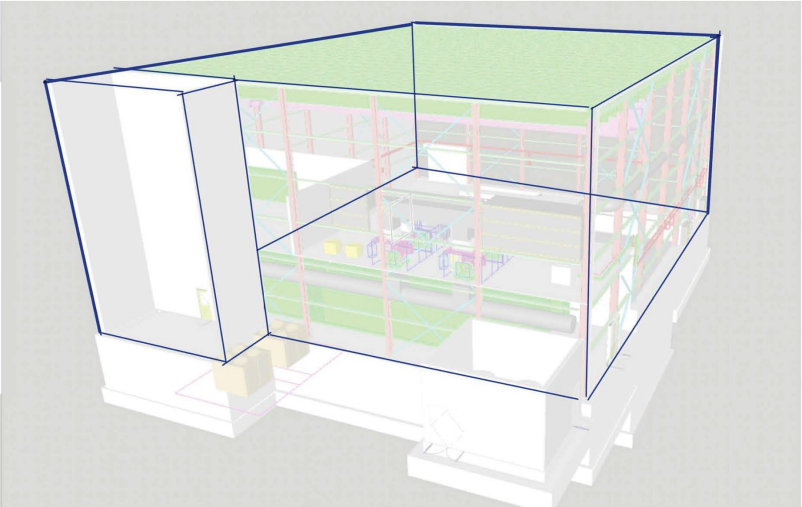


7. BASE ARTICULATION

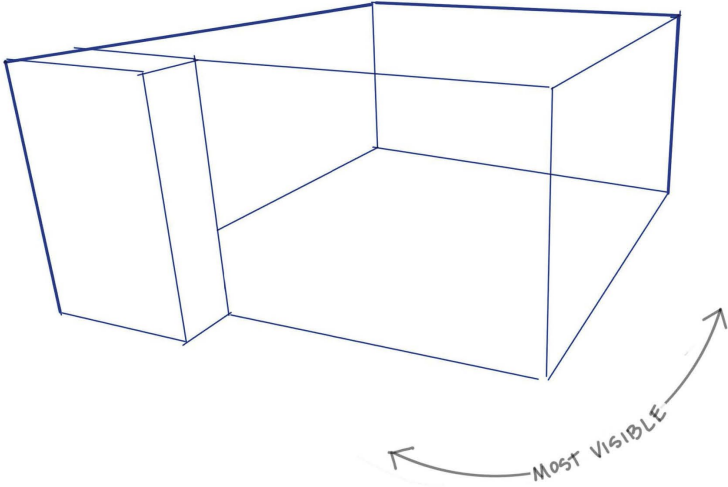


8. FENESTRATION PATTERNS

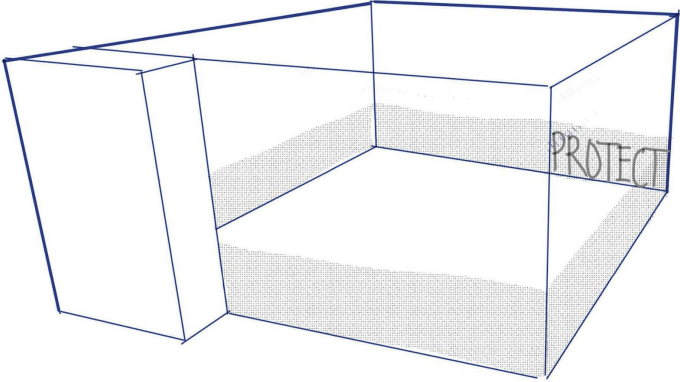
BUILDING ANALYSIS: Architectural Diagrams



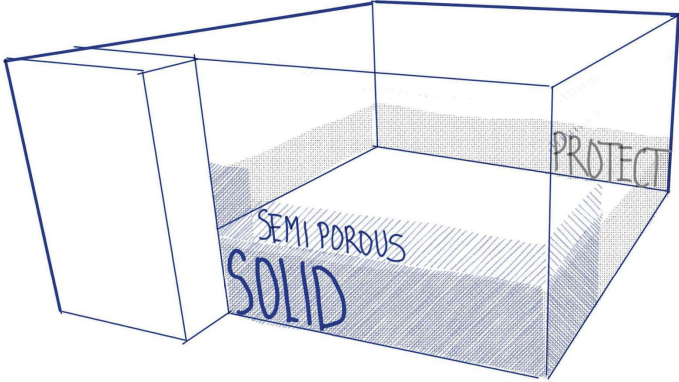
1 STRUCTURAL / MEP OVERLAY



2 BUILDING VISIBILITY

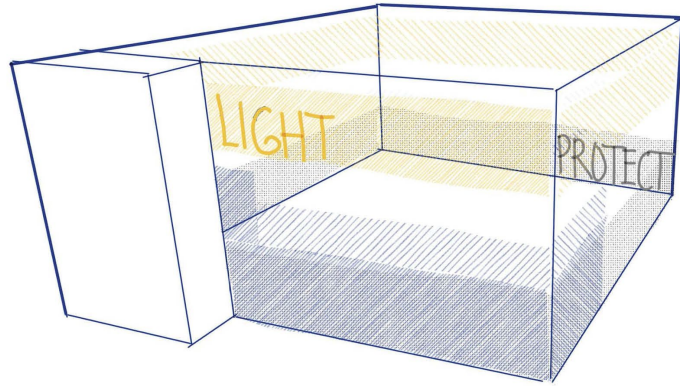


3 PROTECTED BASE

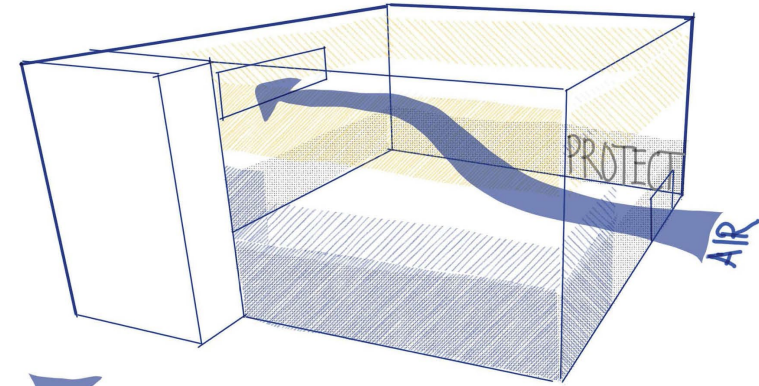


4 SOLID & SEMI-POROUS AREAS

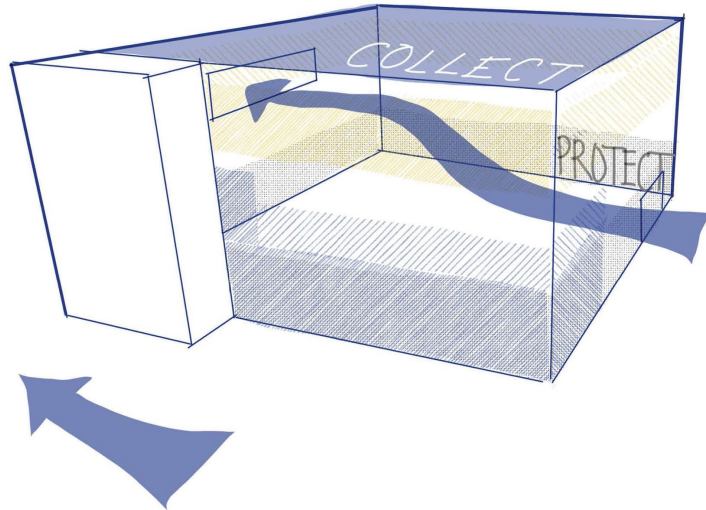
PROJECT CONTEXT: Architectural Responses



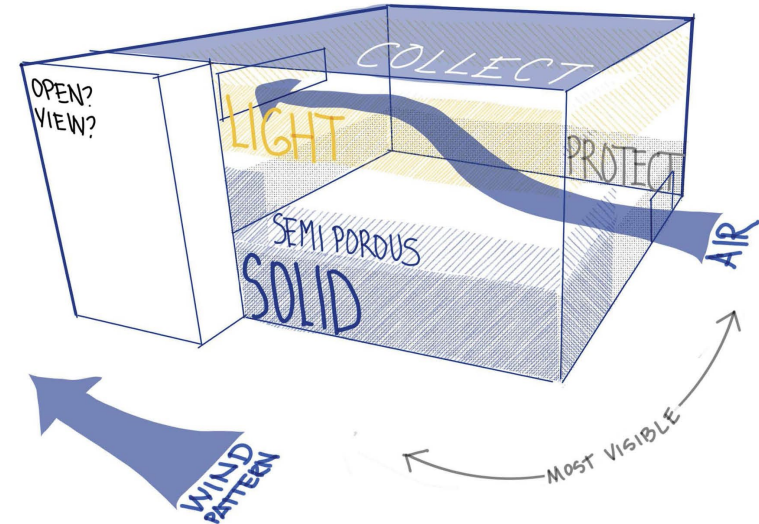
5 DAYLIGHT COLLECTION OPPORTUNITIES



6 SITE WIND PATTERNS



7 STORM WATER COLLECTION



8 OVERLAY DIAGRAM

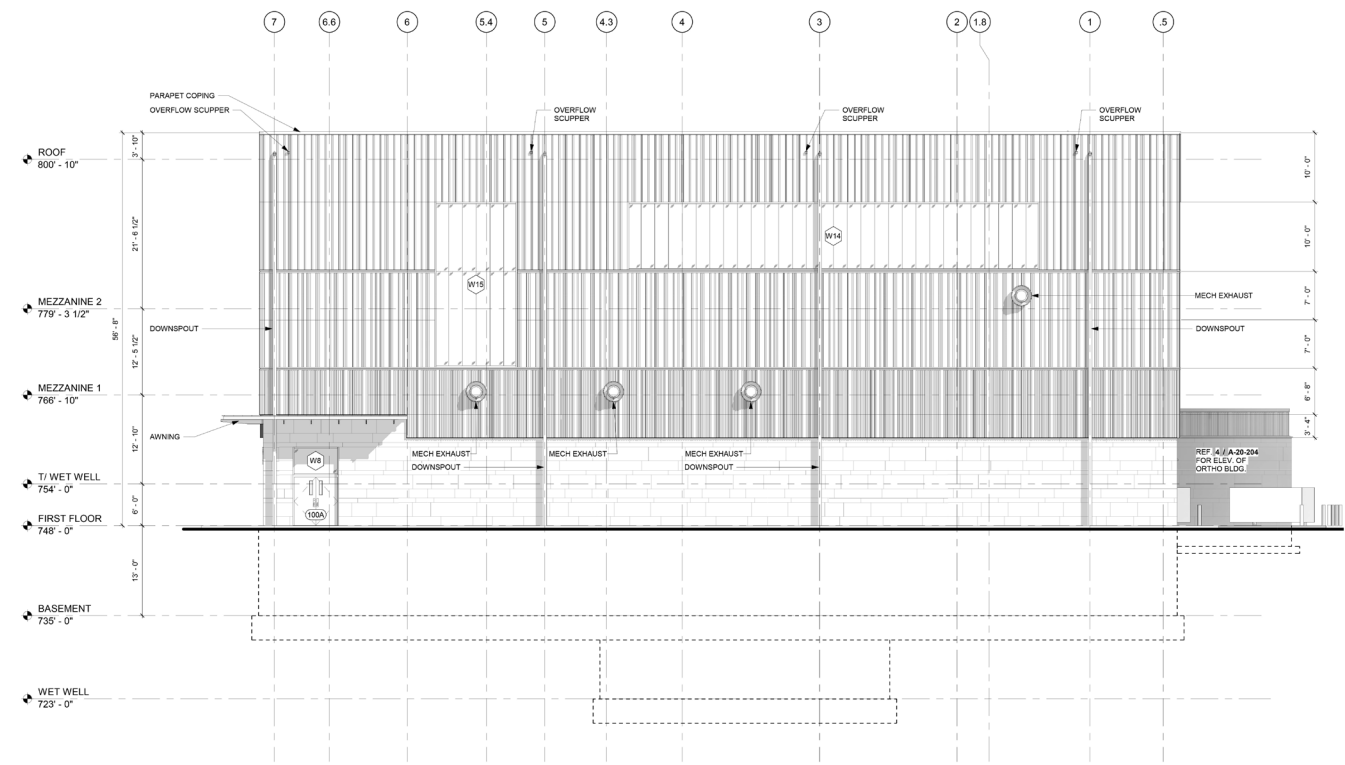
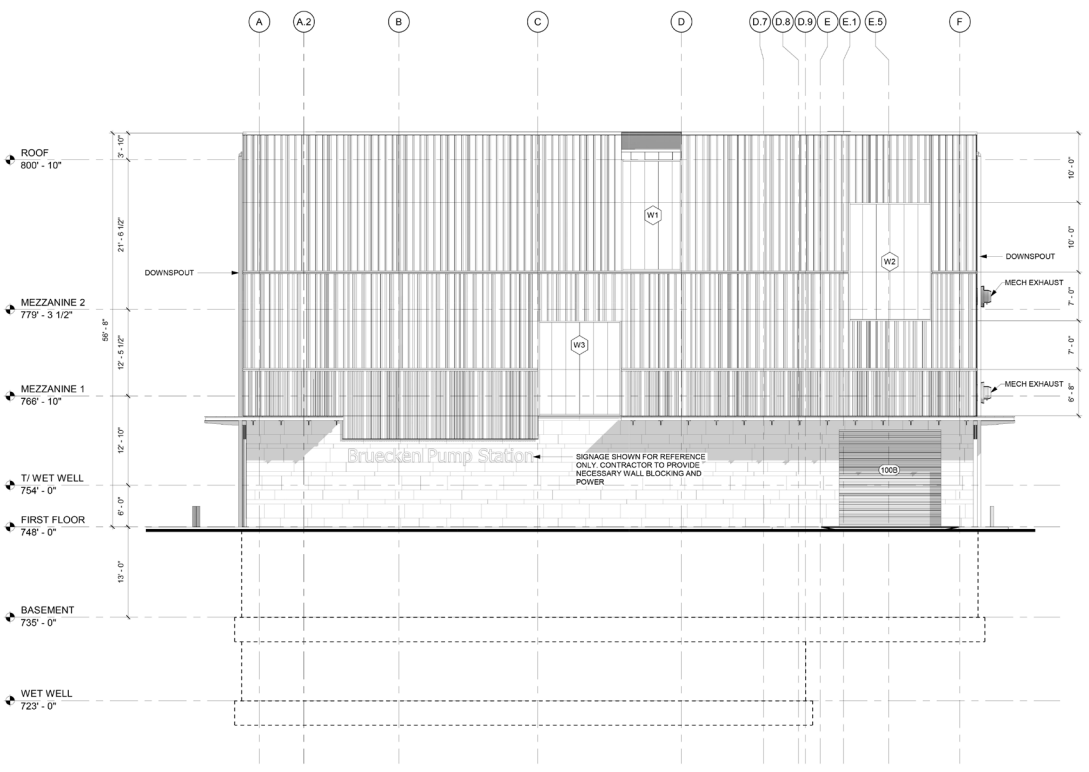
Bruecken Pump Station



Bruecken Pump Station

- Designing and building new facility and associated structures (pictured left), old pump station will remain in place.
- New building will house pumping equipment, original building will be used for other PWSA operations.
- Replacing perimeter fencing.
- Re-organizing materials that are stored on property.





Bruecken Pump Station Construction Impacts

- Trucks and equipment will enter Brilliant Yard via Butler Street (SR 8)/Washington Blvd.
- All work will occur within the facility.
- Project Schedule
 - M-F, 7:00a.m. – 5:00 p.m.



Project Timeline: Bruecken Pump Station

Project/Phase	Anticipated Schedule
Design Completion and Permitting	Currently the 90% design submittal is being reviewed by PWSA. Permitting in progress.
Bruecken Pump Station Upgrades	Contract Award: Fall/Winter 2022 Construction Start: early 2023 Anticipated Completion: early 2026

Preliminary Community Outreach Plan

As we approach the start of construction, we will communicate about construction via:

- Project signs
- Community meeting
- PWSA website

www.pgh2o.com/water-reliability-plan



A woman with short dark hair, wearing a blue polo shirt and large white square earrings, is leaning on a silver metal railing. She is looking out over a canal or river. The background features lush green trees and a building in the distance under a bright sky. The overall scene is bright and sunny.

Thank you

If you have questions or
comments, please contact
Mora McLaughlin
mmclaughlin@pgh2o.com